



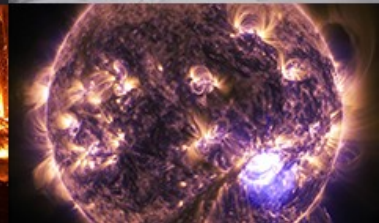
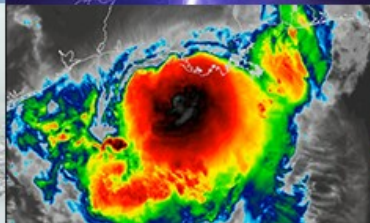
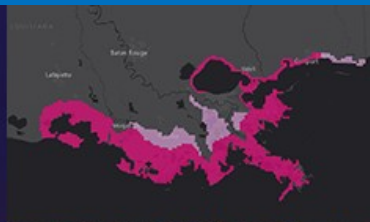
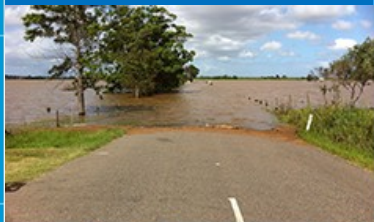
**NATIONAL  
WEATHER  
SERVICE**

# Evaluation of High Resolution Prototypes for the Next Global Forecast System GFSv17

25 Jul 2023, UIFCW Workshop

Lydia Stefanova<sup>1</sup>, Jongil Han<sup>2</sup>, Wei Li<sup>3</sup>, Jessica Meixner<sup>2</sup>, Jiayi Peng<sup>4</sup>, Sulagna Ray<sup>3</sup>,  
Mallory Row<sup>3</sup>, Catherine Thomas<sup>2</sup>

<sup>1</sup>Lynker at NCEP/EMC, <sup>2</sup>NCEP/EMC, <sup>3</sup>SAIC at NCEP/EMC, <sup>4</sup>Axiom at NCEP/EMC



# Acknowledgements to GFS & UFS Active Developers

<p><b>Atmospheric Physics</b></p> <p><b>NCEP/EMC:</b> Jongil Han, Michael Barlage, Anning Cheng, Bing Fu, Hong Guang, Sanath Kumar, Xu Li, Wei Li, Qingfu Liu, Eric Sinsky, Ruiyu Sun, Kevin Viner, Helin Wei, Bo Yang, Fanglin Yang, Rongqian Yang, Weizhong Zheng, Xiqiong Zhou</p> <p><b>ESRL/GSL:</b> Ben Green, Joseph Olson, Tanya Smirnova, Shan Sun, Xia Sun, Michael Toy</p> <p><b>JCSDA/UCAR:</b> Dom Heinzeller,</p> <p><b>ESRL/PSL:</b> Lisa Bengtsson, Jian-Wen Bao, Clara Draper, Grant Firl, Songyou Hong, Philip Pegion, Dustin Swales</p> <p><b>DTC:</b> Ligia Bernardet, Weiwei Li, Man Zhang</p>	<p><b>Data Assimilation</b></p> <p><b>NCEP/EMC:</b> Catherine Thomas, Guillaume Vernieres, Daryl Kleist, Cory Martin, Andrew Collard, Jiarui Dong, Andy Eichmann, Travis Elles, Nick Esposito, Iliana Genkova, Azadeh Gholoubi, Brett Hoover, Xin Jin, Emily Liu, Haixia Liu, Hyun-Chul Lee, Xuanli Li, Ron McLaren, Dagmar Merkova, Sudhir Nadiga, Shastri Paturi, Ashley Stanfield, Steve Stegall, Andy Tangborn, Russ Treadon, Yaping Wang, Youlong Xia</p> <p><b>CIRES/GSL:</b> Bo Huang, Mariusz Pagowski</p> <p><b>PSL:</b> Clara Draper, Jeff Whitaker</p> <p><b>JCSDA/UCAR:</b> Kriti Bhargava, Travis Sluka</p>	<p><b>Coupled Model Component Development</b></p> <p><b>NCEP/EMC:</b> Jessica Meixner, Jiande Wang, Lydia Stefanova, Jun Wang, Yuejian Zhu, Neil Barton, Saeideh Banihashemi, Arun Chawla, Bing Fu, George Gayno, Robert Grumbine, Walter Kolczynski, Matthew Masarik, Avichal Mehra, Ali Salimi-Tarazouj, Denise Worthen</p> <p><b>ESRL/GSL:</b> Ben Green, Shan Sun</p> <p><b>ESRL/PSL:</b> Lisa Bengtsson, Phillip Pegion</p> <p><b>GFDL:</b> Alistair Adcroft, Rusty Benson, Stephen Griffies, Robert Halberg, Matthew Harrison, Brandon Reichl, Marshall Ward</p> <p><b>NCAR:</b> Alper Altuntas, Gokhan Danabasoglu, Keith Lindsay, Gustavo Marques</p> <p><b>NRL/ESMF:</b> Gerhard Theurich</p> <p><b>GMU:</b> Ben Cash, Jim Kinter, Lawrence Marx, Cristiana Stan</p> <p><b>FSU:</b> Alexandra Bozec, Eric Chassignet, Alan Wallcraft</p> <p><b>NASA:</b> Akella Santha</p> <p><b>Univ. Alaska:</b> Katherine Hedstrom</p> <p><b>U. Mich.:</b> Christiane Jablonowski</p> <p><b>Univ. Victoria:</b> Andrew Shao</p>
<p><b>Field Evaluation</b></p> <p><b>NCEP/EMC:</b> Geoff Manikin, Alicia Bentley, Mallory Row, Shannon Shields</p> <p><b>NWS Regional SSDs</b></p> <p><b>NCEP Centers</b></p>	<p><b>Products</b></p> <p><b>NCEP/EMC:</b> Hui-Ya Chuang, Andrew Benjamin, L. Gwen Chen, Yali Mao, Wen Meng, Bo Cui</p>	

# Outline

## High-resolution prototypes: HR1

- Specification of HR1
- Modeling system differences between GFSv16, HR1, and planned GFSv17

## HR1 evaluation

- Evaluation targets
- Results

## Summary



# High Resolution Prototypes: HR1

Starting point: P8 (deterministic, lower resolution, all system components in)

High-Resolution Prototypes: **HR1 (completed)**, HR2 (in progress), HR3 (planned), ...

End point: GFSv17

## Details of HR1

- **Model**

Coupled Model: Atm (C768) - Ocean ( $\frac{1}{4}$  tripolar) - Ice ( $\frac{1}{4}$  tripolar) - Wave ( $\frac{1}{4}$  tripolar)

- **Time periods**

Summer: June 1– Aug. 30, 2020, cold start forecasts at 00Z cycle every 3 days, 16 day forecast

Winter: Dec. 03, 2019 – Feb. 26, 2020, cold start forecasts at 00Z cycle every 3 days, 16 day forecast

Hurricane: July 20, 2020 – Nov 20th, 2020, cold start forecasts at 00Z cycle everyday, 7 day forecast

- **Initial conditions**

Atm: GFSv16

Land: New spin up

Wave: New spin-up forced from GFSv16 (Winter), interpolated from GFSv16 for (Summer, Hurricane)

Ocn/Ice: Replay



# Differences between GFSv16, HR1, and GFSv17

## GFS v16

**Atm:** C364, L127

GFSv16 physics including

- Land: NOAA
- GFDL microphysics
- NSST

**Ocean:** N/A

**Ice:** N/A

**Wave:** 9-25km

**Aerosols:** N/A

GDAS DA

## HR1

**Atm:** C768, L127

Updated physics including

- Land: NOAA-MP
- Thompson microphysics
- NSST

**Ocean:** ¼ tripolar

**Ice:** ¼ tripolar

**Wave:** ¼ tripolar

**Aerosols:** Not invoked

no DA

## GFSv17

**Atm:** C768, L127

Updated physics including

- Land: NOAA-MP
- Thompson microphysics
- NSST

**Ocean:** ¼ tripolar

**Ice:** ¼ tripolar

**Wave:** unstructured

**Aerosols:** In GDAS deterministic forecast only and no aerosol-radiation interaction

GDAS DA (Weakly Coupled)



# Evaluation targets

## Comparison between HR1 with GFSv16 for

- Global distribution of biases
- MJO
- AC score card – geopotential heights, winds, temperature
- CONUS 10-m wind biases
- CONUS 2-m temperature biases
- CAPE magnitude
- TC track and intensity

## Tools

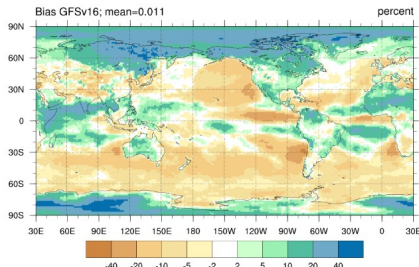
- Non-METplus-based scripts, as in prior prototype evaluations
- METplus-based EMC\_verif-global package ([https://github.com/NOAA-EMC/EMC\\_verif-global.git](https://github.com/NOAA-EMC/EMC_verif-global.git))



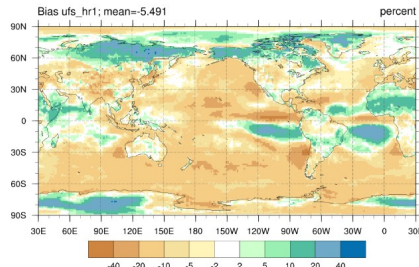
# Total Clouds, SFC Downward Shortwave, Upward longwave: Bias (DJF)

Clouds

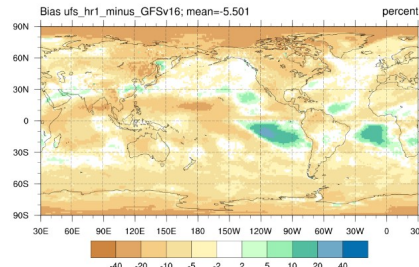
GFSv16 Bias



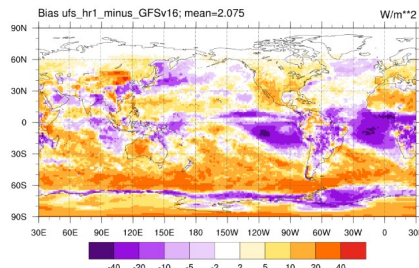
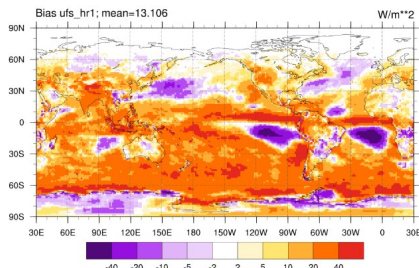
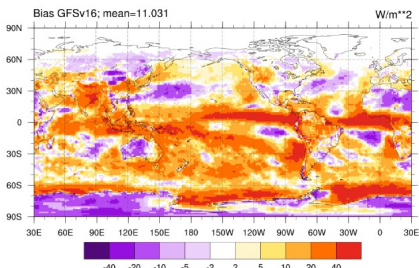
HR1 Bias



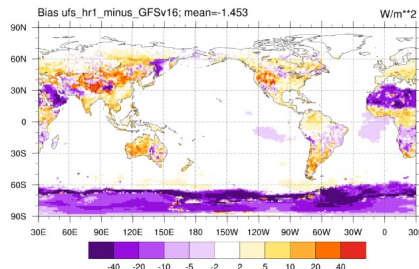
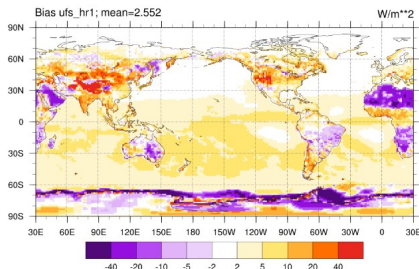
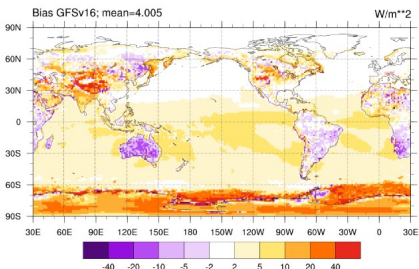
HR1 minus GFSv16



SW down



SW up

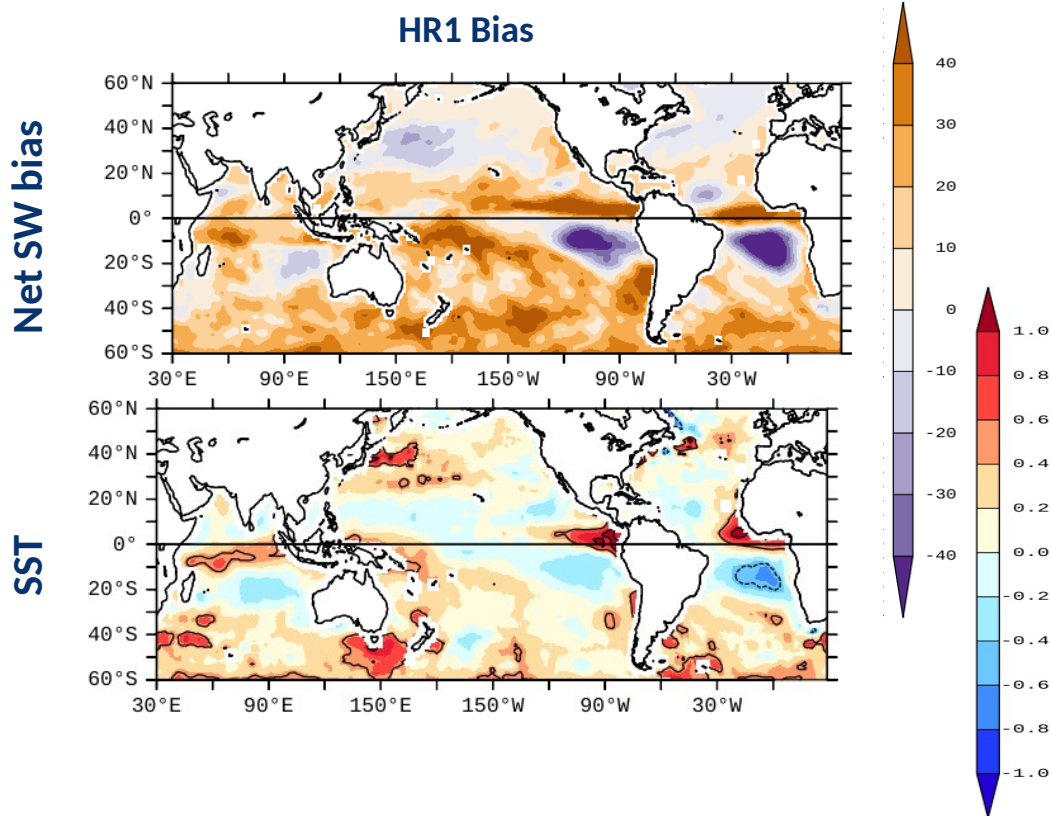


Total clouds generally reduced, but increased south of equator in the eastern tropical Pacific and Atlantic. The reduction is an improvement over Indian Ocean and high latitudes

SFC downward SW underestimation exacerbated in eastern tropical Pacific and Atlantic

SFC upward SW shows negative bias over deserts and sea ice. Result of lower desert albedoes and lower ice concentrations

# SW and SST bias in HR1 (DJF)



Spatial structure similar to low-res P8

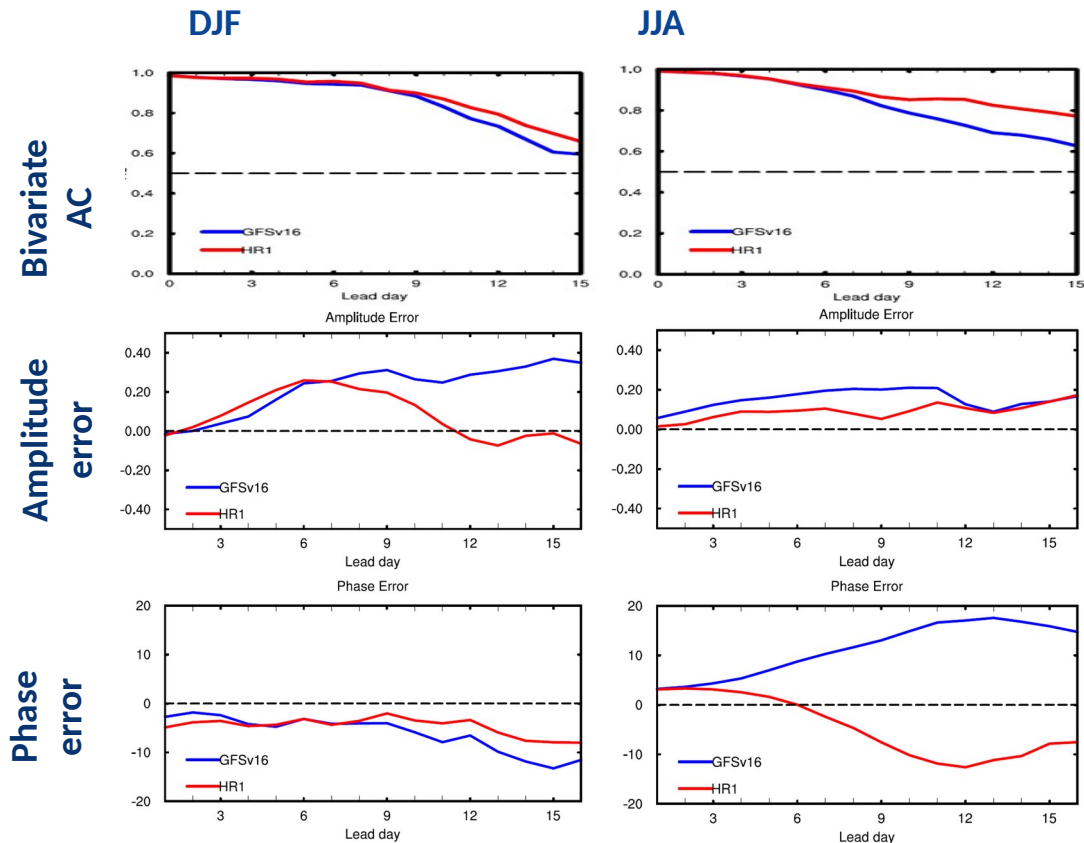
Net SW bias is generally positive, except south of the equator in the eastern tropical Pacific and Atlantic, where HR1 has increased cloud amounts and exacerbated negative downward SW bias

Warm SST bias in the eastern equatorial Pacific and Atlantic. Cold bias south of there.

Close correspondence between net SW bias and SST bias; any discrepancies are largely from the ICs

Biases growing with lead time (not shown).





## AC

- Improved AC in HR1 for both seasons

## Amplitude error

- Reduced amplitude error in HR1 for both seasons.

## Phase error

- Reduced phase error
  - Still too slow in DJF
  - Switched from too fast to too slow in JJA.

For both GFSv16 and HR1, larger amplitude bias in strong MJOs; larger propagation bias in weak MJOs.

# ACC scorecard

Computed with EMC\_verif-global package

[https://github.com/NOAA-EMC/EMC\\_verif-global.git](https://github.com/NOAA-EMC/EMC_verif-global.git)

▼	HR1 is worse than GFSv16 at the 99.9% significance level
▽	HR1 is worse than GFSv16 at the 99% significance level
■	HR1 is worse than GFSv16 at the 95% significance level

▲	HR1 is better than GFSv16 at the 99.9% significance level
△	HR1 is better than GFSv16 at the 99% significance level
■	HR1 is better than GFSv16 at the 95% significance level
■	No statistically significant difference between HR1 and GFSv16

		N. America						N. Hemisphere						S. Hemisphere						
		Day 1	Day 3	Day 5	Day 6	Day 8	Day 10	Day 1	Day 3	Day 5	Day 6	Day 8	Day 10	Day 1	Day 3	Day 5	Day 6	Day 8	Day 10	
DJF	Anomaly Correlation Coefficient	Heights	250hPa	■	■	■	▲	■	■	■	■	■	■	■	■	■	■	■	■	■
		500hPa	■	■	■	▲	■	■	■	■	■	■	■	■	■	■	■	■	■	■
		700hPa	■	■	▲	▲	■	■	▼	■	■	■	■	■	■	▼	■	■	■	■
		1000hPa	▼	■	▲	▲	▲	■	▼	▼	■	■	■	■	■	▼	▼	■	■	■
	Vector Wind	250hPa	■	■	■	■	▲	■	▼	■	■	■	■	■	■	▼	■	■	■	■
		500hPa	▼	■	■	■	▲	■	▼	■	■	■	■	■	▼	▼	■	■	■	■
		850hPa	▼	▼	■	■	▲	■	▼	▼	■	■	■	■	▼	■	■	■	■	■
	Temp	250hPa	▼	■	■	■	■	■	▼	■	■	■	■	■	▼	■	■	■	■	■
		500hPa	▼	■	■	■	■	■	▼	■	■	■	■	■	▼	▼	■	■	■	■
		850hPa	▼	▼	■	■	■	▲	■	▼	▼	▼	■	■	■	▼	▼	▼	▼	▼
	MSLP	MSL	▼	■	■	■	■	■	▼	▼	■	■	■	■	▼	▼	■	■	■	■
	JJA	Anomaly Correlation Coefficient	Heights	250hPa	■	■	■	■	■	▼	▲	▲	■	■	■	▲	▲	■	■	■
500hPa			■	■	■	■	■	■	▼	■	▲	■	■	■	▲	▲	■	■	■	■
700hPa			■	■	■	■	■	■	▼	■	■	▲	■	■	■	■	■	■	■	■
1000hPa			▼	■	■	■	■	■	▼	■	■	■	■	■	■	▼	■	■	■	■
Vector Wind		250hPa	▼	■	■	■	■	■	▼	■	■	■	■	■	▼	▲	■	■	■	■
		500hPa	▼	■	■	■	■	■	▼	■	■	■	■	■	▼	▲	■	■	■	■
		850hPa	▼	■	▲	■	■	■	▼	▼	■	■	■	■	▼	■	■	■	■	■
Temp		250hPa	▼	■	■	■	■	■	▼	■	■	■	■	■	▼	■	■	■	■	▲
		500hPa	▼	■	■	■	■	■	▼	■	■	■	■	■	▼	▲	■	■	■	■
		850hPa	▼	▼	■	■	■	■	▼	▼	▼	■	■	■	■	▼	▼	■	■	■
MSLP		MSL	▼	■	■	■	■	■	▼	▼	■	■	■	■	▼	▼	■	■	■	■

## Day 1

ACC scores for HR1 worse than GFSv16 (initialization shock)

## Days 3-10

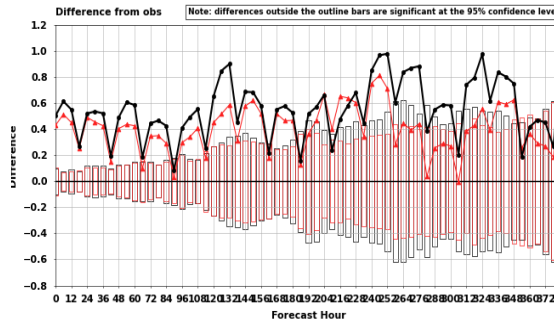
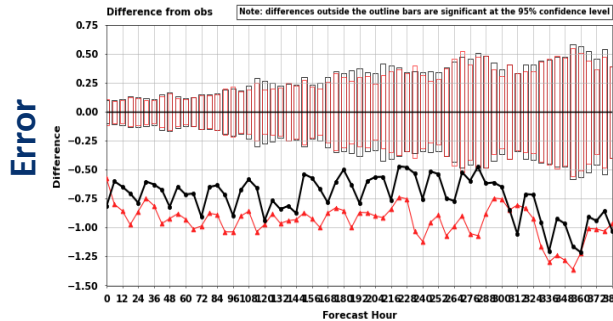
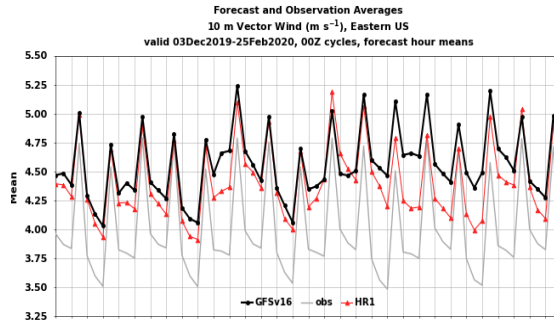
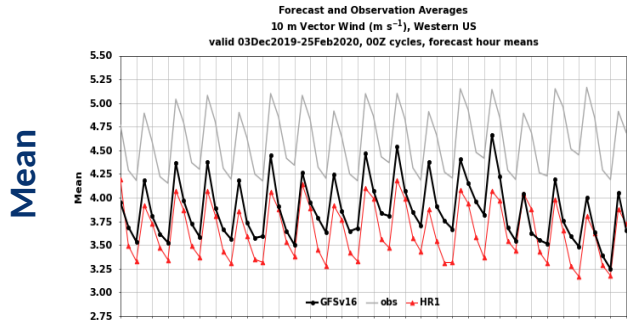
- **Improvement:** tropics and winter hemisphere – heights, wind speed, upper tropospheric temperature
- **Worsening:** low level temperatures



# Mean Bias: 10m Wind Speed (DJF)

## West CONUS

## East CONUS



— GFSv16    — HR1    — OBS

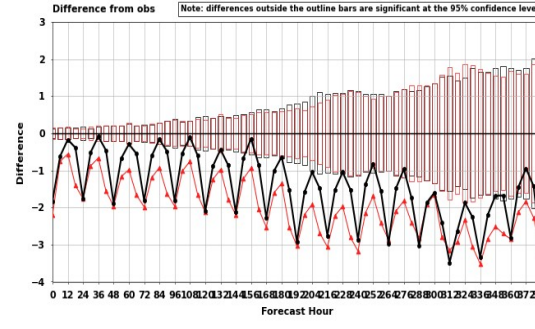
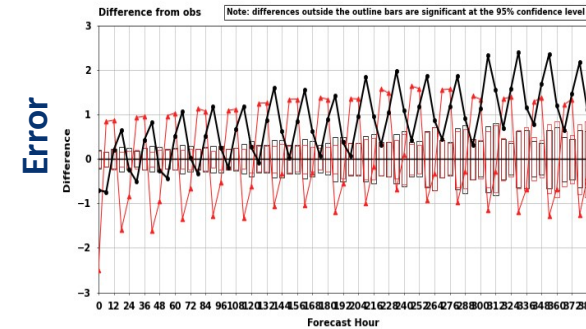
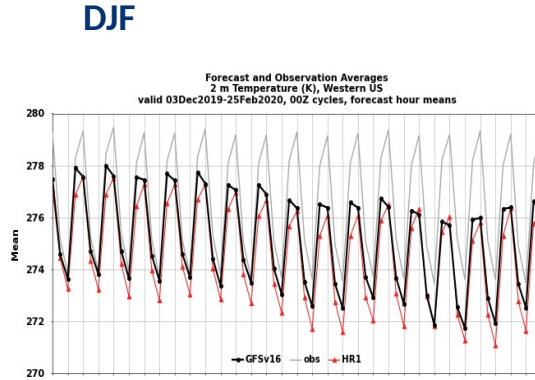
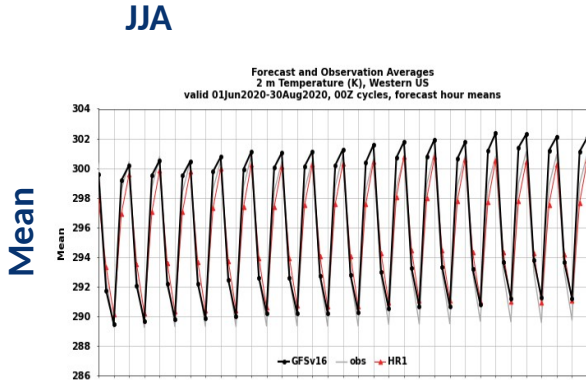
Sign of biases same as in GFSv16. Wind speeds on average **lower** in HR1 than GFSv16

- Exacerbated underestimation in Western CONUS
- Reduced overestimation in Eastern CONUS

(The shifts are in the same direction for JJA)



# Mean Bias: T2m (West Conus)



GFSv16
  HR1
  OBS

## JJA

- Reduced daytime warm bias, improved diurnal cycle shape
- Reduced diurnal range

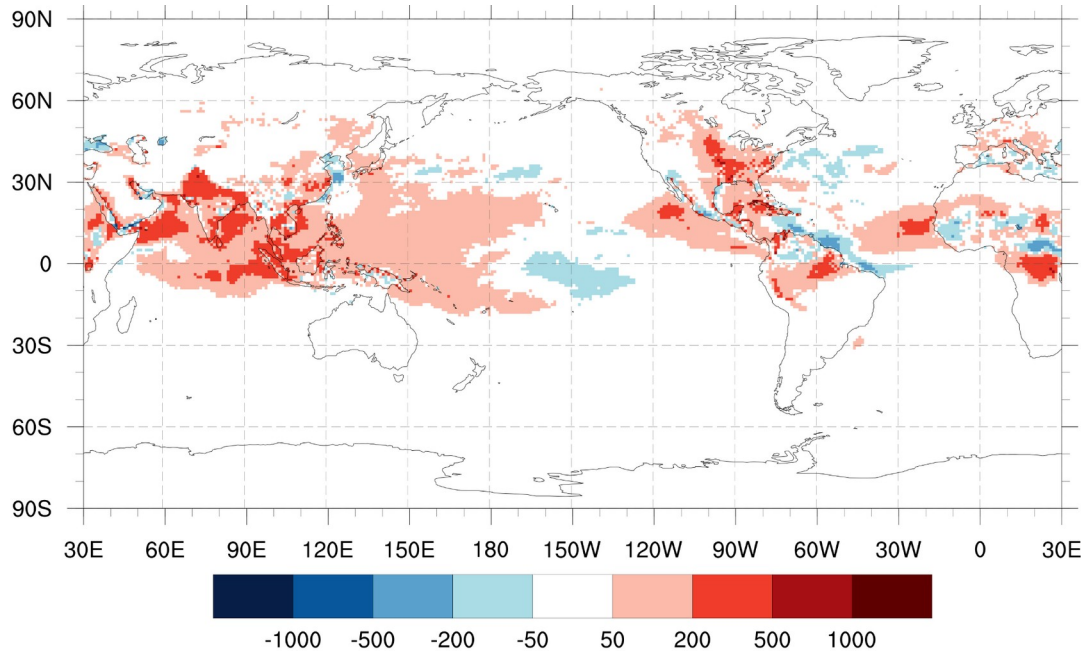
## DJF

- Exacerbated nighttime cold bias
- Improved diurnal cycle shape



# CAPE

## HR1 minus GFSv16, JJA 2020

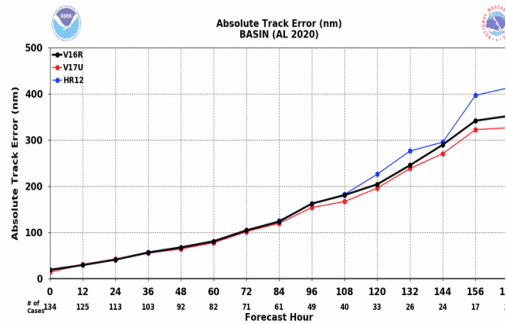


Larger CAPE in HR1 compared to in GFSv16

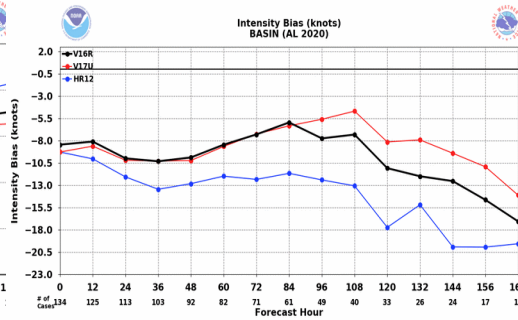
This is a move in the right direction but the **magnitude of increase is insufficient.**

# TC intensity and track error

## TC track error

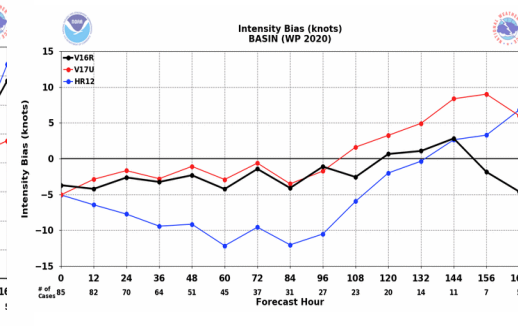
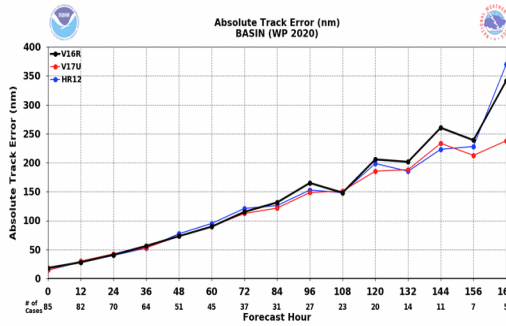


## TC Intensity error



— HR1 — Uncoupled HR — GFSv16

W. Pac



## Track error

- Slightly increased for N. Atl, little change for W. Pac

## Intensity error

- Both GFSv16 and HR1 underestimate intensity
- The **intensity underestimation is clearly exacerbated in HR1.** A not-surprising impact of coupling

Steps to improve for HR2



# Summary

## Benefits of HR1

- Improved MJO AC, amplitude, propagation speed (but propagation too slow)
- Improved ACC for heights, winds, upper tropospheric temperature in winter hemisphere and tropics
- Reduced West CONUS T2m warm bias in summer, improved diurnal cycle shape
- Reduced East CONUS 10m wind speed overestimation (but still positive bias)
- Increased CAPE (although insufficient)

## Deficiencies of HR1

- Overestimation of total cloud cover in eastern tropical Pacific/Atlantic south of the equator and consequent underestimation of downward shortwave, leading to cold SST biases
- Warm SST biases along the equator in eastern Pacific/Atlantic
- Reduced ACC for temperatures at low atmospheric levels
- Exacerbated West CONUS 10m wind speed underestimation
- Exacerbated West CONUS T2m nighttime cold bias
- Exacerbated TC intensity underestimation

**Steps to correct these deficiencies are planned for HR2**

Contact: [Lydia.B.Stefanova@noaa.gov](mailto:Lydia.B.Stefanova@noaa.gov)



# BACK-UP SLIDES





# Bias scorecard: DJF

DJF

		N. America					N. Hemisphere					S. Hemisphere					Tropics								
		Day 1	Day 3	Day 5	Day 6	Day 8	Day 10	Day 1	Day 3	Day 5	Day 6	Day 8	Day 10	Day 1	Day 3	Day 5	Day 6	Day 8	Day 10	Day 1	Day 3	Day 5	Day 6	Day 8	Day 10
Heights	10hPa	▼	▼	▼	▼	▼	▼	▼	▼	▼	▼	▼	▼	▼	▼	▼	▼	▼	▼	▼	▼	▼	▼	▼	▼
	20hPa	▼	▼	▼	▼	▼	▼	▼	▼	▼	▼	▼	▼	▼	▼	▼	▼	▼	▼	▼	▼	▼	▼	▼	▼
	50hPa	▼	▼	▼	▲	▲	▲	▼	▼	▼	▼	▼	▼	▼	▼	▼	▼	▼	▼	▼	▼	▼	▼	▼	▼
	100hPa	▼	▲	▲	▲	▲	▲	▼	▼	▼	▼	▼	▼	▼	▼	▼	▼	▼	▼	▼	▼	▼	▼	▼	▼
	200hPa	▼	▲	▲	▲	▲	▲	▼	▼	▼	▼	▼	▼	▼	▼	▼	▼	▼	▼	▼	▼	▼	▼	▼	▼
	500hPa	▼	▼	▼	▲	▲	▲	▼	▼	▼	▼	▼	▼	▼	▼	▼	▼	▼	▼	▼	▼	▼	▼	▼	▼
	700hPa	▼	▼	▼	▼	▼	▼	▼	▼	▼	▼	▼	▼	▼	▼	▼	▼	▼	▼	▼	▼	▼	▼	▼	▼
	850hPa	▼	▼	▼	▲	▲	▲	▼	▼	▼	▼	▼	▼	▼	▼	▼	▼	▼	▼	▼	▼	▼	▼	▼	▼
1000hPa	▲	▼	▼	▼	▼	▼	▼	▼	▼	▼	▼	▼	▼	▼	▼	▼	▼	▼	▼	▼	▼	▼	▼	▼	
Wind Speed	10hPa	▲	▲	▲	▲	▲	▲	▲	▲	▲	▲	▲	▲	▲	▲	▲	▲	▲	▲	▲	▲	▲	▲	▲	▲
	20hPa	▲	▲	▲	▲	▲	▲	▲	▲	▲	▲	▲	▲	▲	▲	▲	▲	▲	▲	▲	▲	▲	▲	▲	▲
	50hPa	▼	▲	▲	▼	▼	▼	▼	▼	▼	▼	▼	▼	▼	▼	▼	▼	▼	▼	▼	▼	▼	▼	▼	▼
	100hPa	▼	▲	▲	▼	▼	▼	▼	▼	▼	▼	▼	▼	▼	▼	▼	▼	▼	▼	▼	▼	▼	▼	▼	▼
	200hPa	▲	▼	▼	▼	▼	▼	▼	▼	▼	▼	▼	▼	▼	▼	▼	▼	▼	▼	▼	▼	▼	▼	▼	▼
	500hPa	▲	▼	▼	▼	▼	▼	▼	▼	▼	▼	▼	▼	▼	▼	▼	▼	▼	▼	▼	▼	▼	▼	▼	▼
	700hPa	▲	▼	▼	▼	▼	▼	▼	▼	▼	▼	▼	▼	▼	▼	▼	▼	▼	▼	▼	▼	▼	▼	▼	▼
	850hPa	▲	▲	▲	▲	▲	▲	▼	▼	▼	▼	▼	▼	▼	▼	▼	▼	▼	▼	▼	▼	▼	▼	▼	▼
1000hPa	▼	▼	▼	▼	▼	▼	▼	▼	▼	▼	▼	▼	▼	▼	▼	▼	▼	▼	▼	▼	▼	▼	▼	▼	
Temp	10hPa	▲	▲	▲	▲	▲	▲	▲	▲	▲	▲	▲	▲	▲	▲	▲	▲	▲	▲	▲	▲	▲	▲	▲	▲
	20hPa	▲	▲	▲	▲	▲	▲	▲	▲	▲	▲	▲	▲	▲	▲	▲	▲	▲	▲	▲	▲	▲	▲	▲	▲
	50hPa	▼	▼	▼	▼	▼	▼	▼	▼	▼	▼	▼	▼	▼	▼	▼	▼	▼	▼	▼	▼	▼	▼	▼	▼
	100hPa	▼	▼	▼	▼	▼	▼	▼	▼	▼	▼	▼	▼	▼	▼	▼	▼	▼	▼	▼	▼	▼	▼	▼	▼
	200hPa	▼	▼	▼	▼	▼	▼	▼	▼	▼	▼	▼	▼	▼	▼	▼	▼	▼	▼	▼	▼	▼	▼	▼	▼
	500hPa	▼	▼	▼	▼	▼	▼	▼	▼	▼	▼	▼	▼	▼	▼	▼	▼	▼	▼	▼	▼	▼	▼	▼	▼
	700hPa	▼	▼	▼	▼	▼	▼	▼	▼	▼	▼	▼	▼	▼	▼	▼	▼	▼	▼	▼	▼	▼	▼	▼	▼
	850hPa	▲	▲	▲	▲	▲	▲	▼	▼	▼	▼	▼	▼	▼	▼	▼	▼	▼	▼	▼	▼	▼	▼	▼	▼
1000hPa	▲	▲	▲	▲	▲	▲	▼	▼	▼	▼	▼	▼	▼	▼	▼	▼	▼	▼	▼	▼	▼	▼	▼	▼	

- ▼ HR1 is worse than GFSv16 at the 99.9% significance level
- ▼ HR1 is worse than GFSv16 at the 99% significance level
- ▼ HR1 is worse than GFSv16 at the 95% significance level
- ▲ HR1 is better than GFSv16 at the 99.9% significance level
- ▲ HR1 is better than GFSv16 at the 99% significance level
- ▲ HR1 is better than GFSv16 at the 95% significance level
- No statistically significant difference between HR1 and GFSv16



# Bias scorecard: JJA

JJA

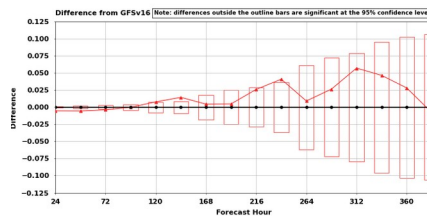
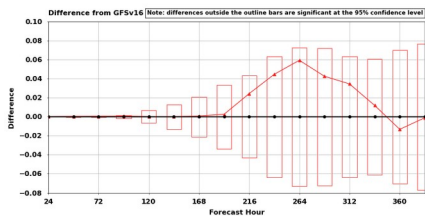
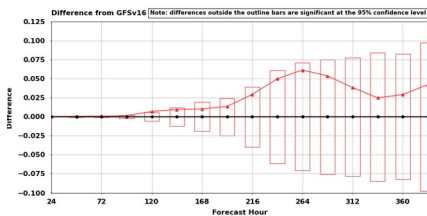
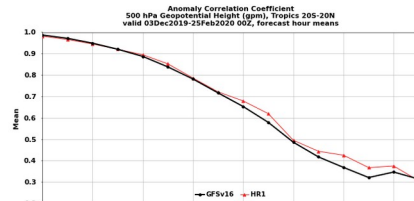
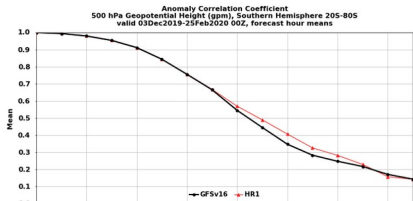
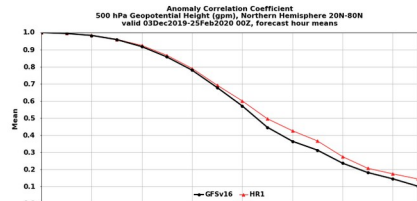
		N. America					N. Hemisphere					S. Hemisphere					Tropics								
		Day 1	Day 3	Day 5	Day 6	Day 8	Day 10	Day 1	Day 3	Day 5	Day 6	Day 8	Day 10	Day 1	Day 3	Day 5	Day 6	Day 8	Day 10	Day 1	Day 3	Day 5	Day 6	Day 8	Day 10
Heights	10hPa	▲	▲	▲	■	■	■	▲	▲	▲	▲	▲	■	▼	▼	■	■	■	■	▲	▲	▲	▲	▲	■
	20hPa	▲	▲	■	■	▼	■	▲	▲	■	■	■	■	▲	▲	▼	▼	■	■	▲	▲	▼	▼	▼	■
	50hPa	▲	▼	■	■	■	■	▲	▼	■	■	■	■	▲	▲	■	■	■	■	▲	▲	▼	▼	▼	■
	100hPa	▲	▼	■	■	■	■	▲	▼	■	■	■	■	▲	▲	▼	▼	■	■	▲	▲	▲	▲	▲	■
	200hPa	▼	■	▲	▲	▲	■	▼	■	▲	▲	▲	▲	▲	▲	▼	▼	■	■	▲	▲	▲	▲	▲	▼
	500hPa	■	■	▲	▲	■	■	▲	▲	▲	▲	▲	■	▼	▼	▼	▼	■	■	▲	▲	▼	▼	▼	▼
	700hPa	■	▼	■	■	■	■	▲	▼	■	■	■	■	▼	▼	▼	▼	■	■	▲	▲	▲	▲	▲	▲
	850hPa	■	▼	■	■	■	■	▲	▲	■	■	■	■	▼	▼	▼	■	■	■	▼	▲	▲	▲	▲	■
	1000hPa	▼	▼	■	■	■	■	▲	■	■	■	■	■	▼	■	▲	▲	■	■	▲	▲	▲	▲	▲	■
	Wind Speed	10hPa	■	▼	▼	■	■	■	▼	■	■	■	■	■	■	■	■	■	■	■	▼	▼	■	■	■
20hPa		■	▼	▼	■	■	■	■	■	■	■	■	■	■	■	■	■	■	■	▼	■	▼	▼	■	■
50hPa		▼	▼	▼	▲	▼	■	▼	▲	▲	▲	▲	▲	▼	▼	▲	■	■	■	▼	▼	▼	▼	▼	▼
100hPa		■	■	■	■	▲	■	■	■	■	▼	▼	■	■	■	■	■	■	■	■	■	■	■	▲	▲
200hPa		▲	■	■	■	■	■	▲	▲	■	■	■	■	▼	▼	■	■	■	■	▼	▼	▼	▼	▼	■
500hPa		▲	▲	■	■	■	■	▲	▲	▲	■	■	■	▲	▲	▼	▼	■	■	▼	▼	▼	▼	▼	■
700hPa		▲	■	■	■	■	■	▲	▲	■	■	■	■	▲	▲	■	■	■	■	▼	▼	▼	▼	■	■
850hPa		▲	■	■	■	■	■	▼	▼	▲	■	■	■	▲	▼	▼	■	■	■	▼	▼	■	■	▲	▲
1000hPa		▲	▲	▼	▼	■	■	▼	▼	▼	▼	■	■	▼	▼	▼	▼	▼	■	▼	▼	▼	▼	▼	■
Temp	10hPa	▲	▲	▲	▲	▲	▲	▲	▲	▲	▲	▲	▲	▲	▲	▲	▲	▲	▲	■	▲	■	■	■	▼
	20hPa	▲	▲	▲	▲	▲	▲	▲	▲	▲	▲	▲	▲	▲	▲	▲	▲	▲	▲	▼	▲	▲	▲	▲	▲
	50hPa	▼	■	▼	▼	▼	■	▼	▼	▼	▼	▼	■	■	■	■	■	■	■	▲	■	▼	▼	▼	▼
	100hPa	■	▼	▼	▼	▼	■	▼	▼	▼	▼	▼	■	▼	▼	▼	▼	▼	■	▼	▼	▼	▼	▼	▼
	200hPa	▼	▼	■	■	■	■	■	■	■	■	■	■	▲	■	■	■	■	■	▼	▼	▼	▼	▼	▼
	500hPa	▲	▲	▲	▲	▲	■	▲	▲	▲	▲	▲	▲	▲	▲	▼	■	■	■	▲	■	■	■	■	■
	700hPa	▼	■	■	■	■	■	▼	■	■	■	■	■	▼	■	▲	▲	■	■	▼	▼	▼	▼	▼	▼
	850hPa	▼	▼	▼	▲	▲	■	▼	▲	▲	▲	▲	▲	▼	▲	▲	▲	▲	■	▼	▼	▼	▼	▼	▼
1000hPa	▼	▼	▼	▼	■	■	▲	■	■	■	■	■	▼	▼	▼	▼	▼	■	▼	▼	▼	▼	▼	■	

- ▼ HR1 is worse than GFSv16 at the 99.9% significance level
- ▼ HR1 is worse than GFSv16 at the 99% significance level
- HR1 is worse than GFSv16 at the 95% significance level
- ▲ HR1 is better than GFSv16 at the 99.9% significance level
- ▲ HR1 is better than GFSv16 at the 99% significance level
- HR1 is better than GFSv16 at the 95% significance level
- No statistically significant difference between HR1 and GFSv16



# ACC: 500mb Geopotential Height

DJF



— GFSv16  
— HR1

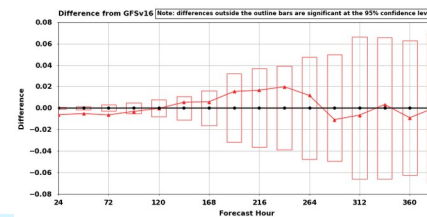
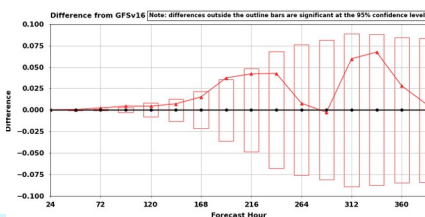
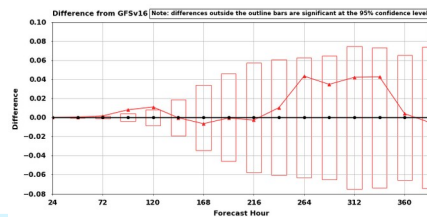
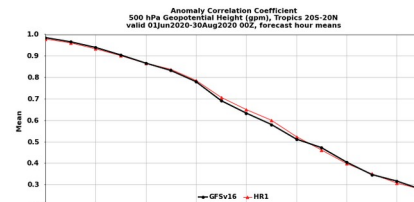
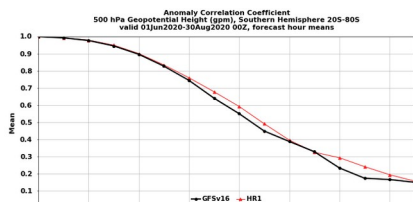
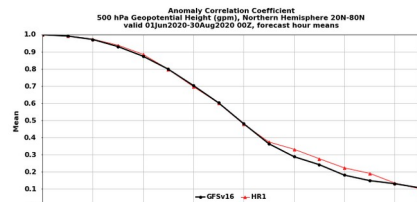
Northern Hemisphere

Southern Hemisphere

Tropics

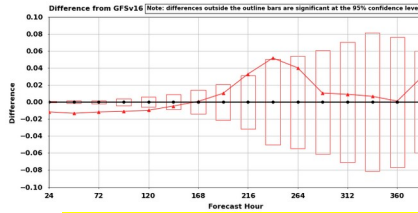
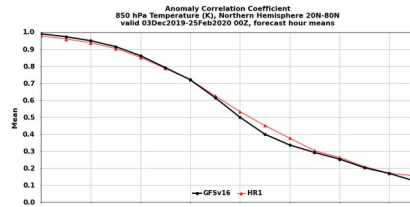
Apparent improvement in 500mb heights in NH/SH/Tropics, starting around day 3-5, although not consistently statistically significant

JJA

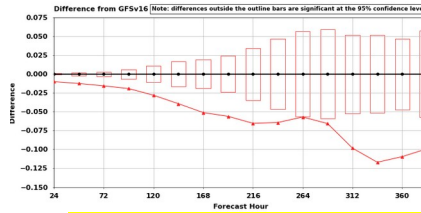
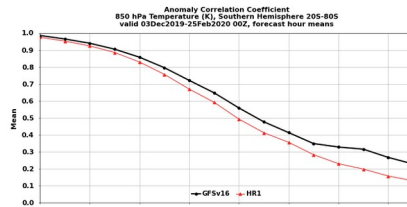


# ACC: 850mb Temperature

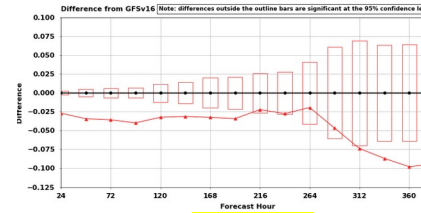
DJF



Northern Hemisphere



Southern Hemisphere

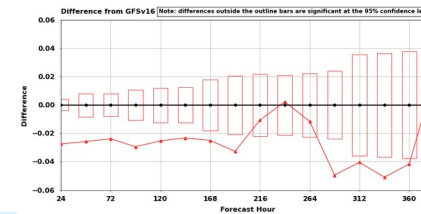
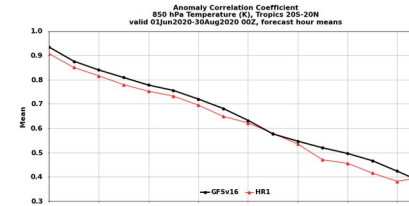
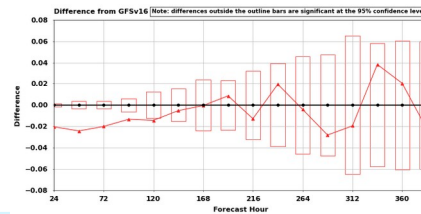
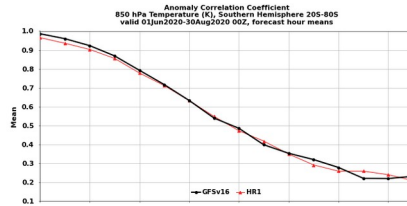
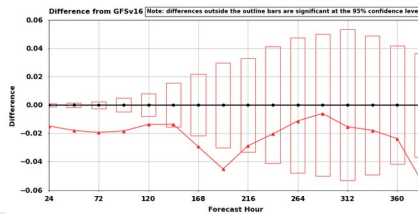
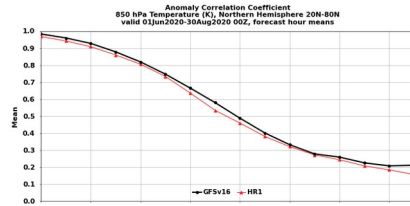


Tropics

— GFSv16  
— HR1

Statistically significant **degradation** for 850 mb Temperature, particularly in the summer hemisphere (SH in DJF, NH in JJA), and in the Tropics

JJA



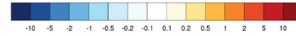
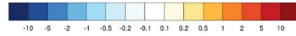
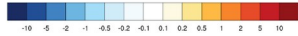
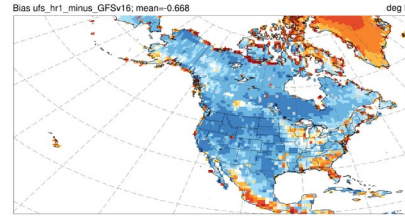
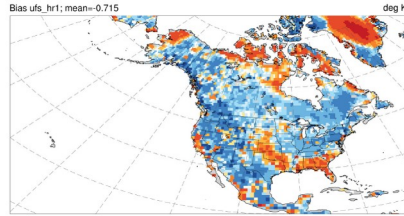
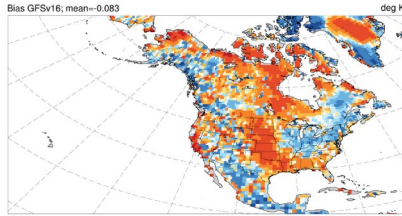
# T2max, T2min (JJA)

## GFSv16 Bias

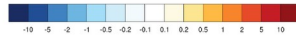
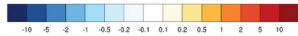
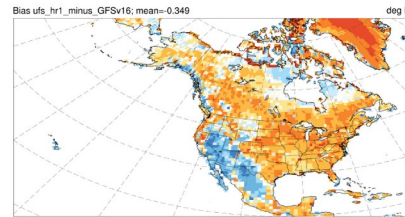
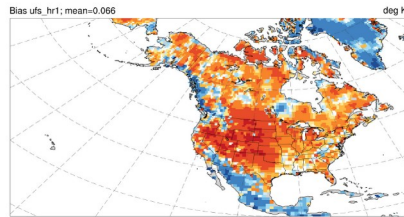
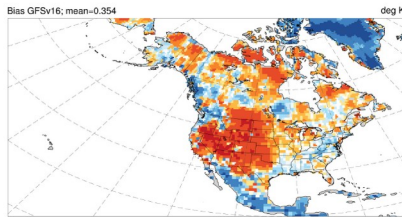
## HR1 Bias

## HR1 minus GFSv16

T2max



T2min



Mostly lower Tmax  
Mostly higher Tmin

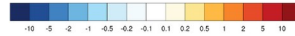
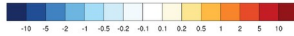
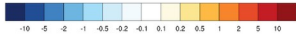
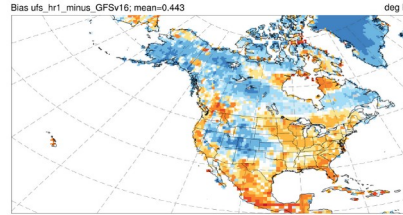
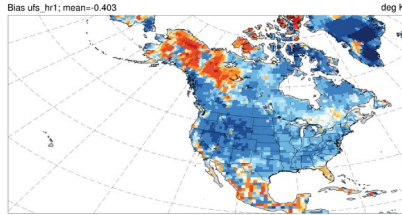
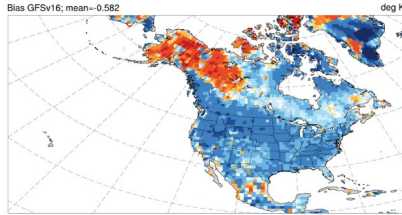
# T2max, T2min (DJF)

## GFSv16 Bias

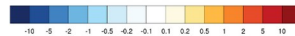
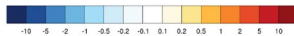
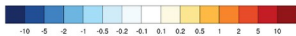
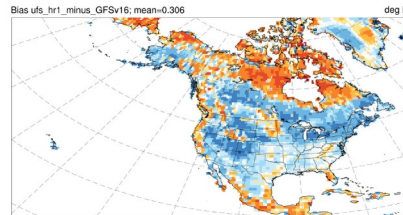
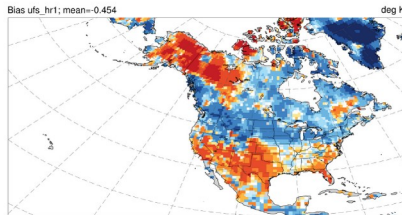
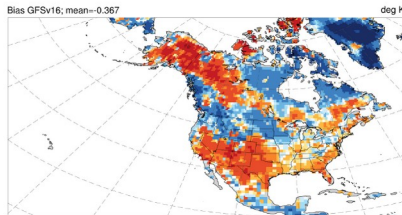
## HR1 Bias

## HR1 minus GFSv16

T2max

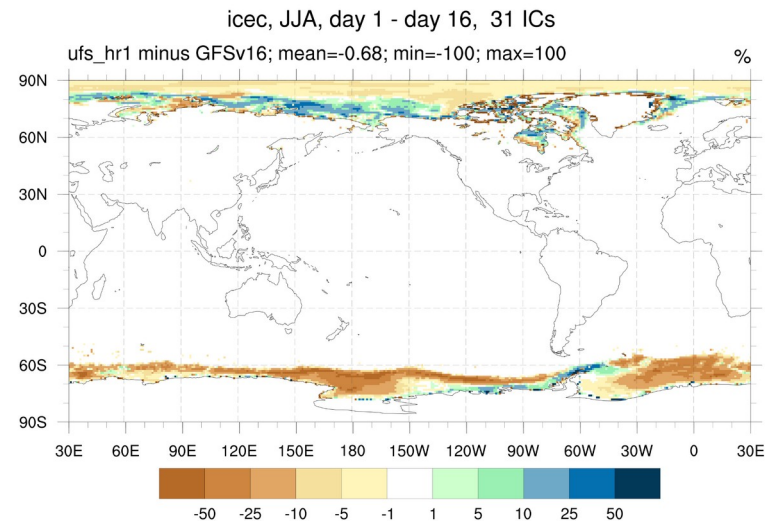
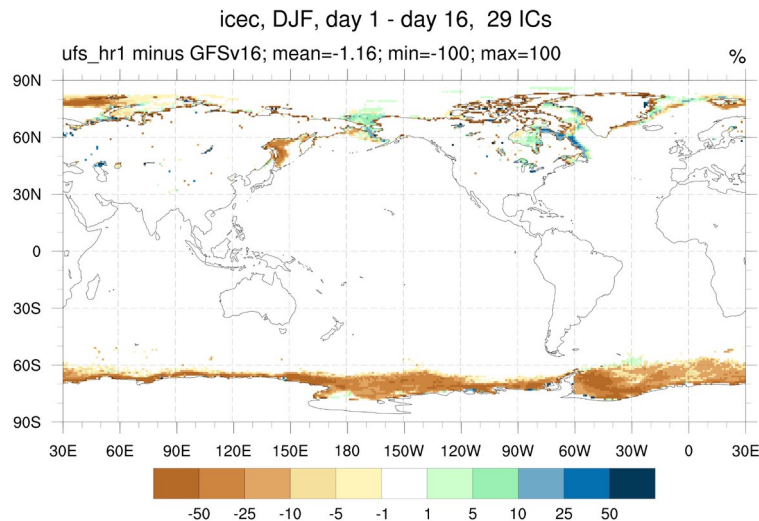


T2min



Mostly higher Tmax  
Mostly lower Tmin

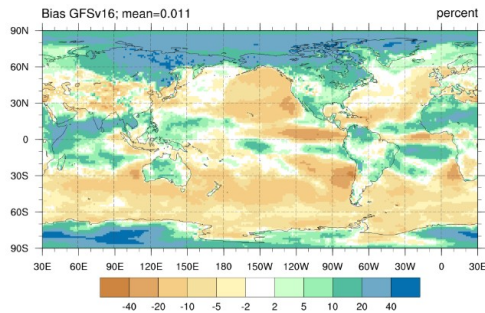
# Ice Concentration, HR1 minus GFSv16



- Ice concentration (and thickness) differences between HR1 and GFSv16 are notable in both SH and NH, but particularly prominent in SH.
- This is a known issue from the Replay ICs for ice, its solution is being implemented by PSL

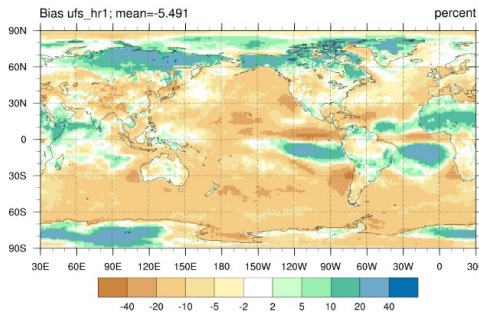
# Total Clouds, bias wrt CERES

## GFSv16 Bias

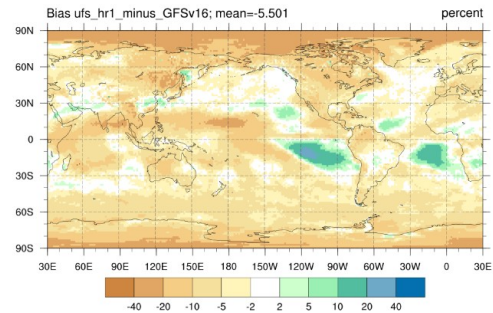


DJF

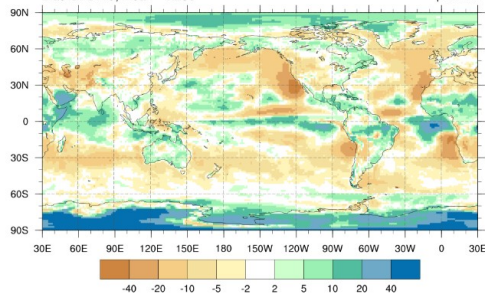
## HR1 Bias



## HR1 minus GFSv16

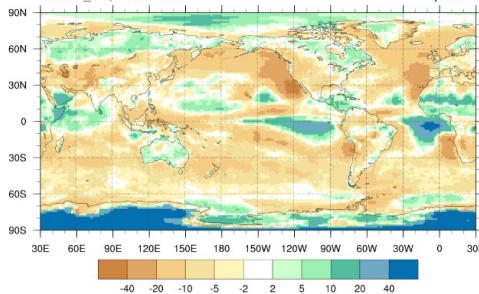


## GFSv16 Bias

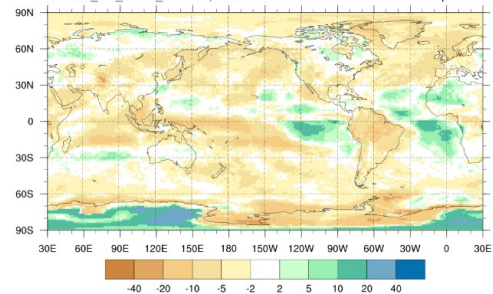


JJA

## HR1 Bias



## HR1 minus GFSv16

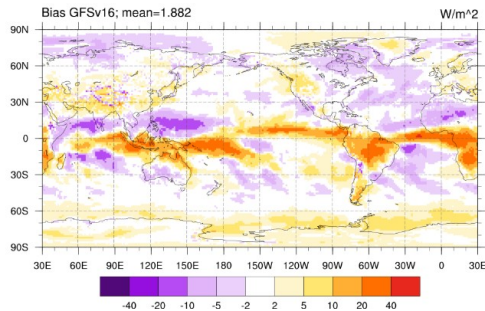


- GFSv16 overestimates the total cloud cover over high latitudes, Indian ocean, Western equatorial Pacific, and south of the equator in the eastern tropical Pacific and Atlantic, as well as over Northern Africa. Cloud cover is underestimated over the remainder of oceans
- HR1 has less clouds than GFSv16, except for the eastern tropical Pacific and Atlantic, where it is cloudier



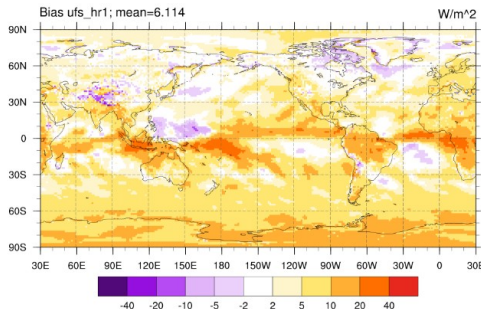
# OLR, bias wrt NOAA-CDR

## GFSv16 Bias

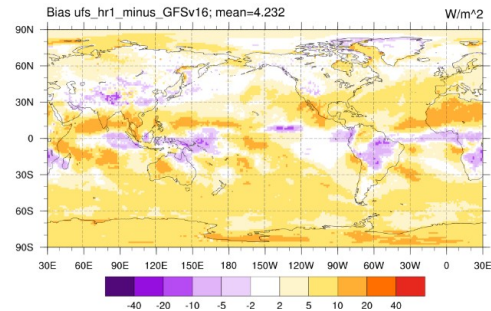


DJF

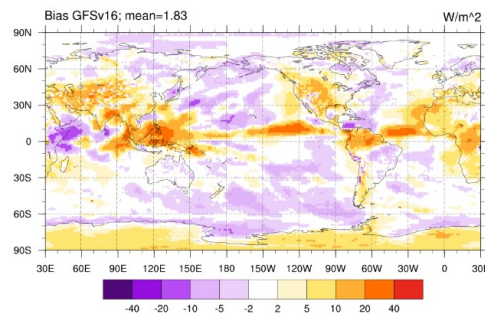
## HR1 Bias



## HR1 minus GFSv16

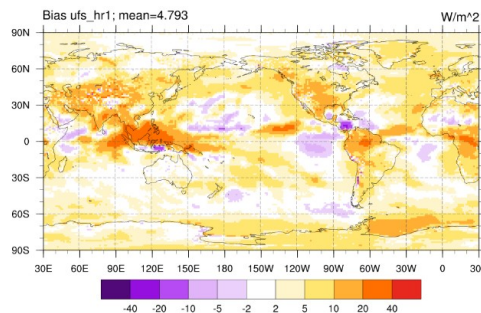


## GFSv16 Bias

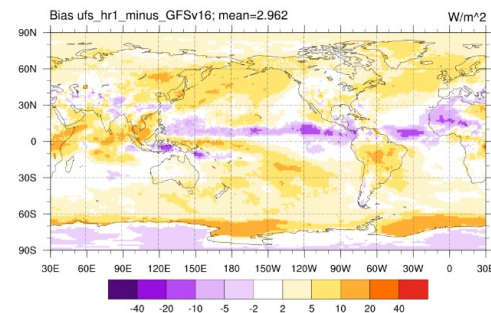


JJA

## HR1 Bias



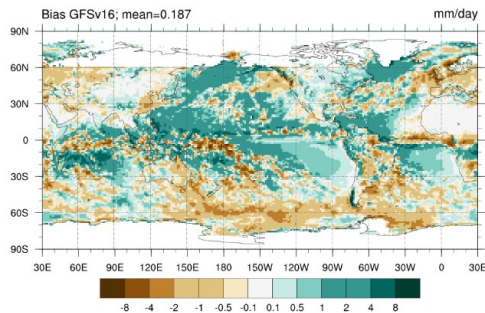
## HR1 minus GFSv16



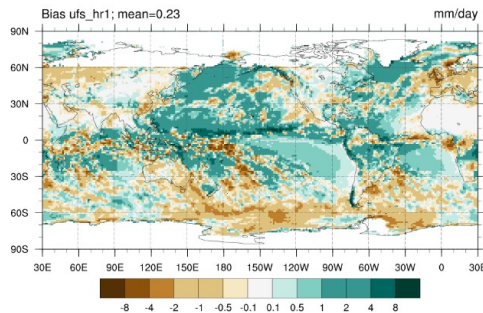
- OLR reduced (bias improved) along the equator (SH in DJF, NH in JJA). OLR increased (bias improved) in Indian Ocean

# OLR, bias wrt NOAA CDR

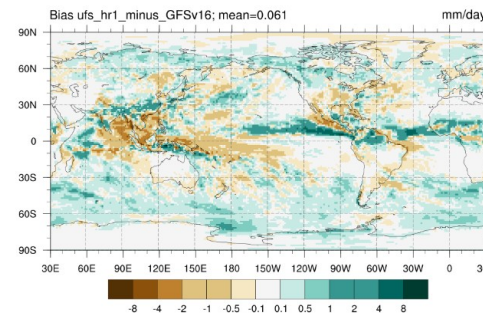
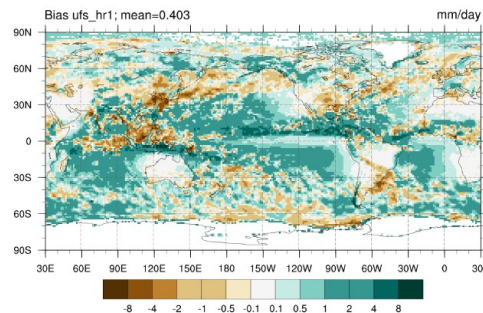
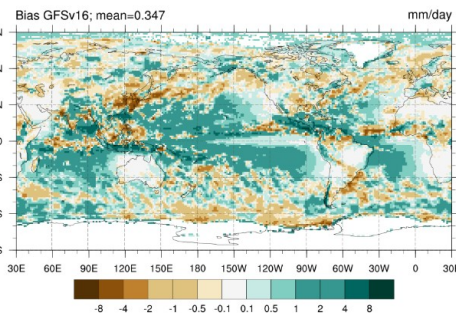
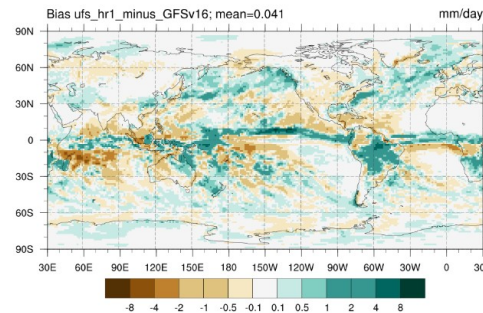
## GFSv16 Bias



## HR1 Bias



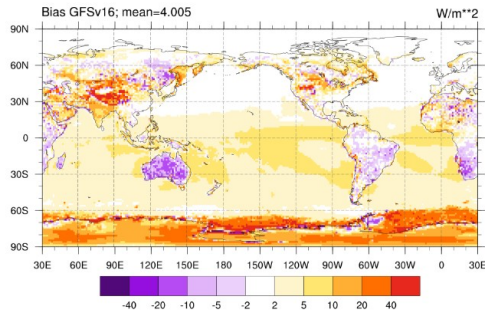
## HR1 minus GFSv16



- Precip increased where OLR reduced, and vice versa

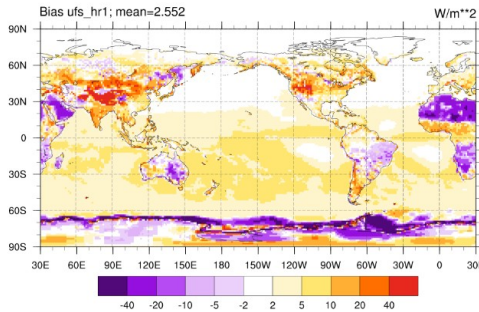
# Surface upward shortwave radiation, bias wrt CERES

## GFSv16 Bias

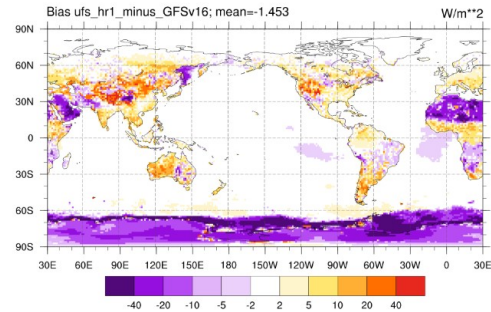


DJF

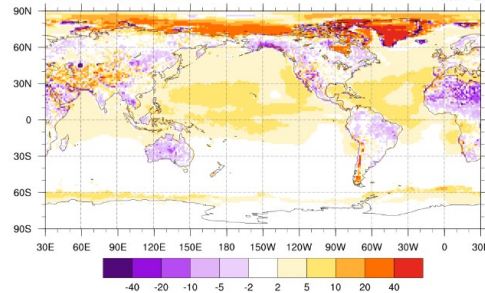
## HR1 Bias



## HR1 minus GFSv16

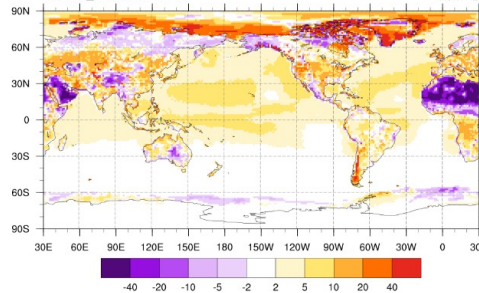


## Bias GFSv16; mean=-2.528

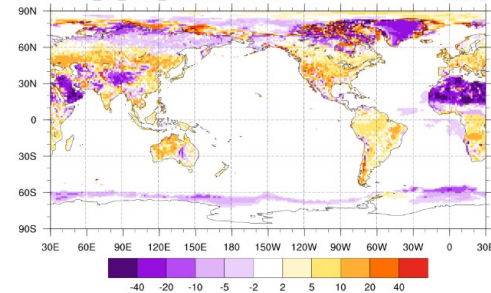


JJA

## Bias ufs\_hr1; mean=2.455



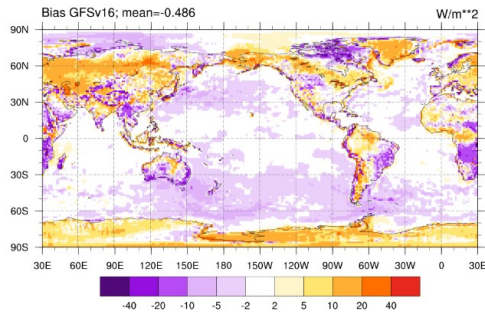
## Bias ufs\_hr1\_minus\_GFSv16; mean=-0.073



- Most prominent differences between GFSv16 and HR1: Sahara, Arabian Peninsula (deserts) and Antarctic/Greenland (permanent ice/snow), suggesting lower albedoes in HR1
- For the desert regions, this is an exacerbation of negative bias, while for the ice/snow regions it is an amelioration of positive bias

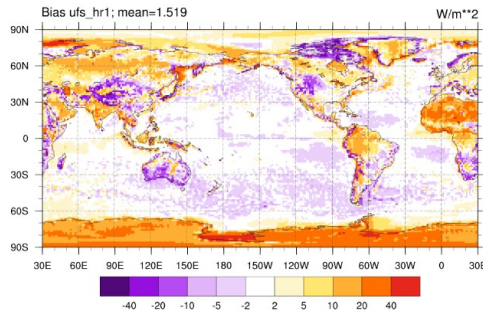
# Surface upward longwave radiation, bias wrt CERES

## GFSv16 Bias

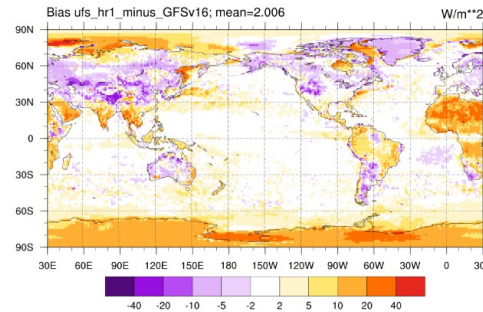


DJF

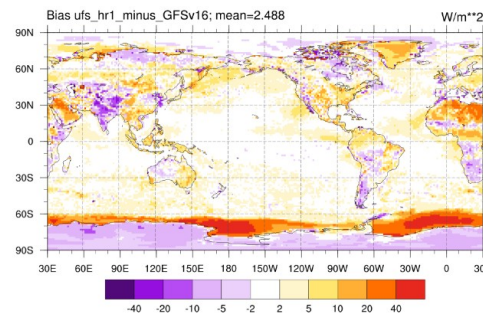
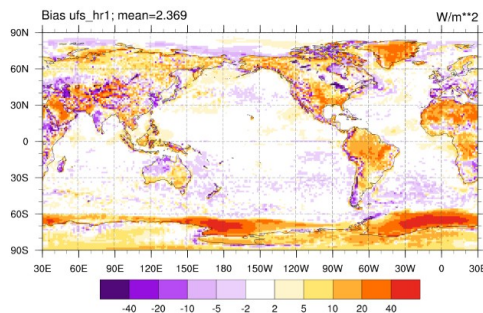
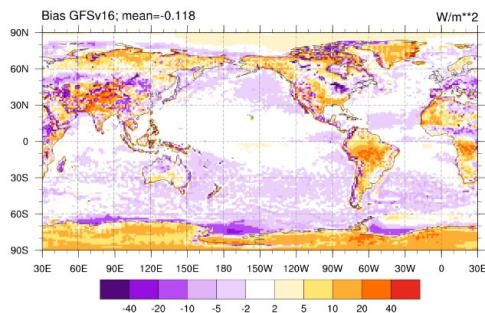
## HR1 Bias



## HR1 minus GFSv16



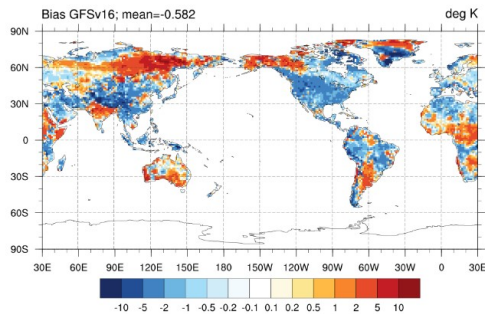
JJA



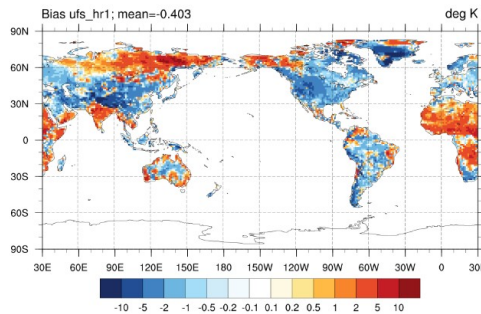
- Upward longwave radiation at the surface: increased positive bias notable over Sahara, Arabian Peninsula (deserts), and in the Southern ocean in JJA – reflecting warmer biases in these regions.
- The warmer biases over the Southern ocean in JJA stem from reduced ice extent (attributed to Replay initialization)

# 2-m Tmax, bias wrt CPC

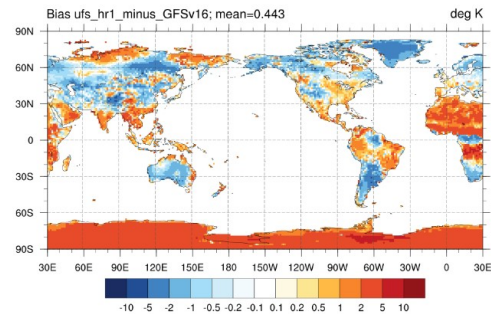
## GFSv16 Bias



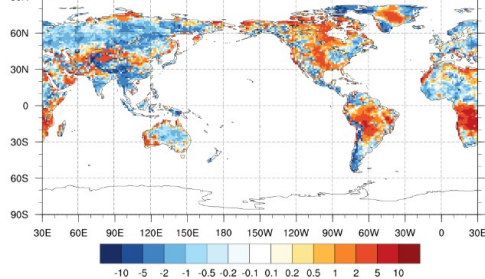
## HR1 Bias



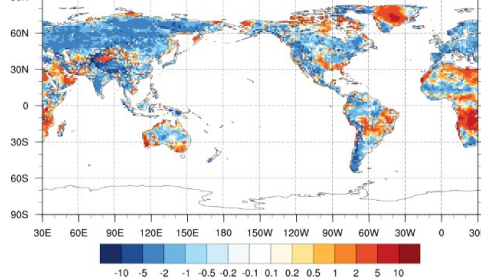
## HR1 minus GFSv16



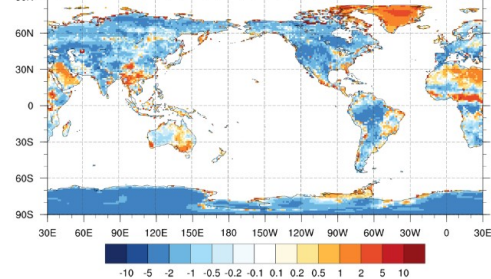
## GFSv16 Bias



## HR1 Bias



## HR1 minus GFSv16



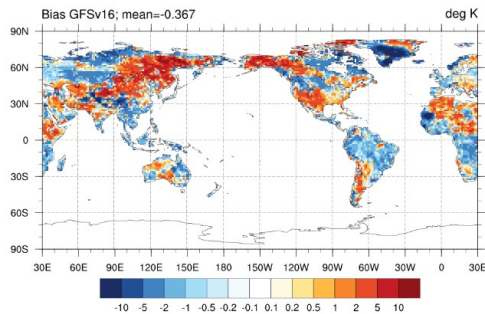
DJF

JJA

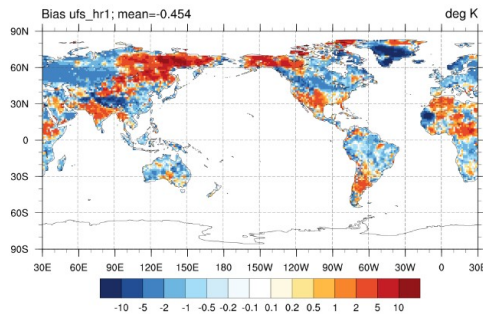
- Deserts: Tmax is warmer (consistent with lower albedo)
- CONUS
  - Winter : slight reduction of cold bias in the eastern US, but still cool bias
  - Summer: reduced warm bias in central US, cool bias elsewhere (and most of Eurasia)

# 2-m Tmin, bias wrt CPC

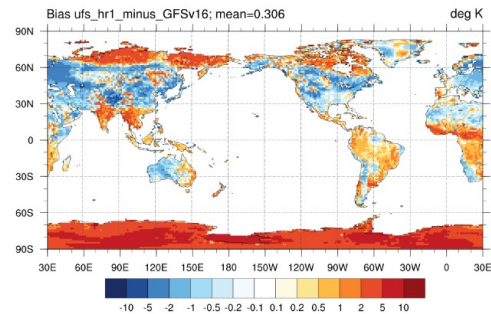
## GFSv16 Bias



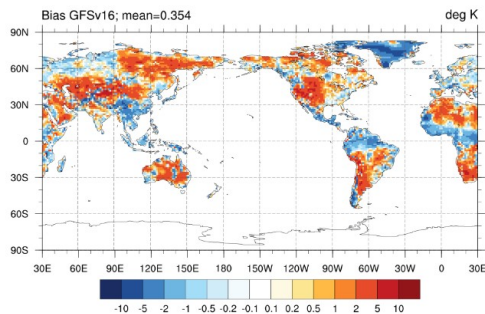
## HR1 Bias



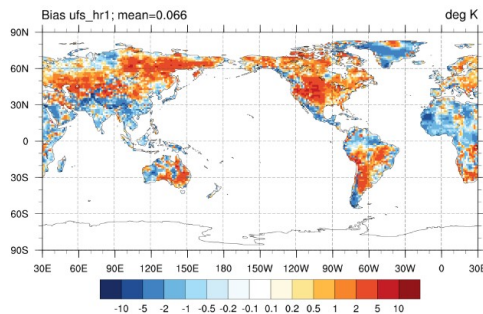
## HR1 minus GFSv16



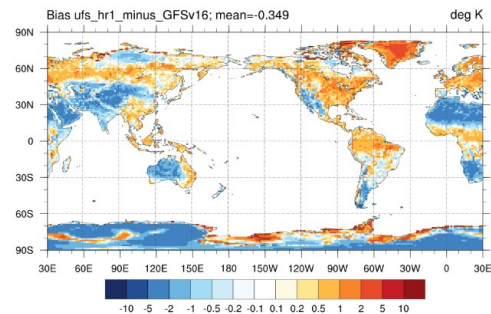
## Bias GFSv16; mean=0.354



## Bias ufs\_hr1; mean=0.066



## Bias ufs\_hr1\_minus\_GFSv16; mean=-0.349



DJF

JJA

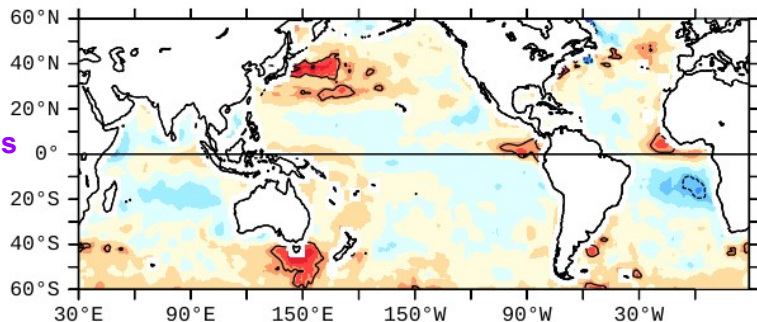
- Deserts: Tmin is cooler (consistent with reduced cloudiness)
- CONUS
  - Winter Tmin: slight reduction of the warm bias (increased cold bias to the north)
  - Summer Tmin: slight increase in warm bias, except for the west coast

# SST bias in weekly averaged forecasts of HR1

Winter case

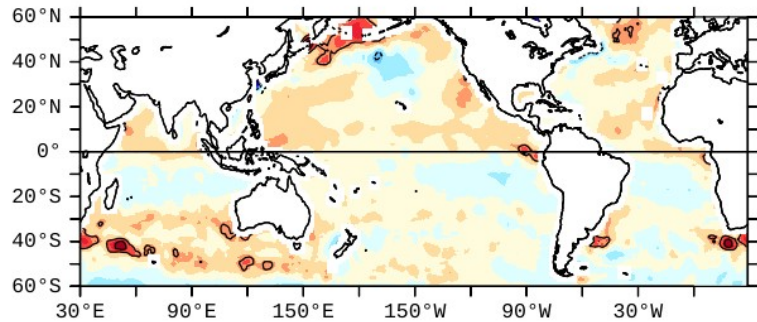
Summer case

SST bias, Winter HR1, Week 1

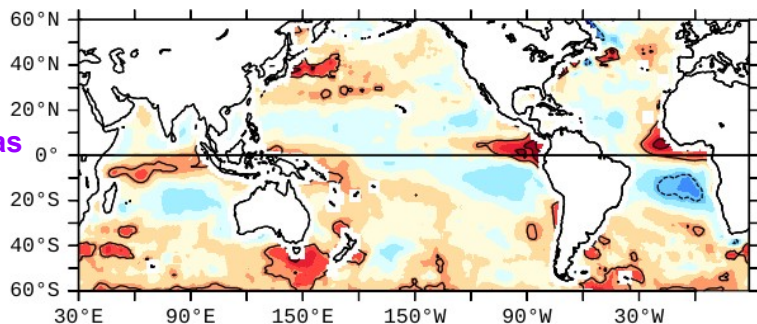


Week 1 bias

SST bias, Summer HR1, Week 1

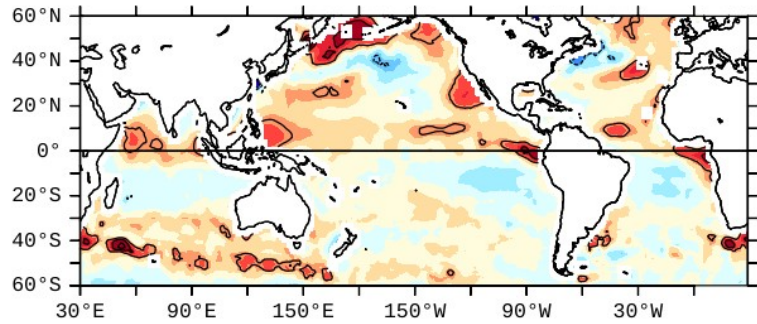


SST bias, Winter HR1, Week 2



Week 2 bias

SST bias, Summer HR1, Week 2



Warm bias enhanced in summer hemisphere. Bias increases from week 1 to 2  
Warm bias (Kuroshio and south of Australia) and too cold bias in south tropical Atlantic in winter  
Overall, spatial structure similar to low-res prototype 8; differences largely due to ICs